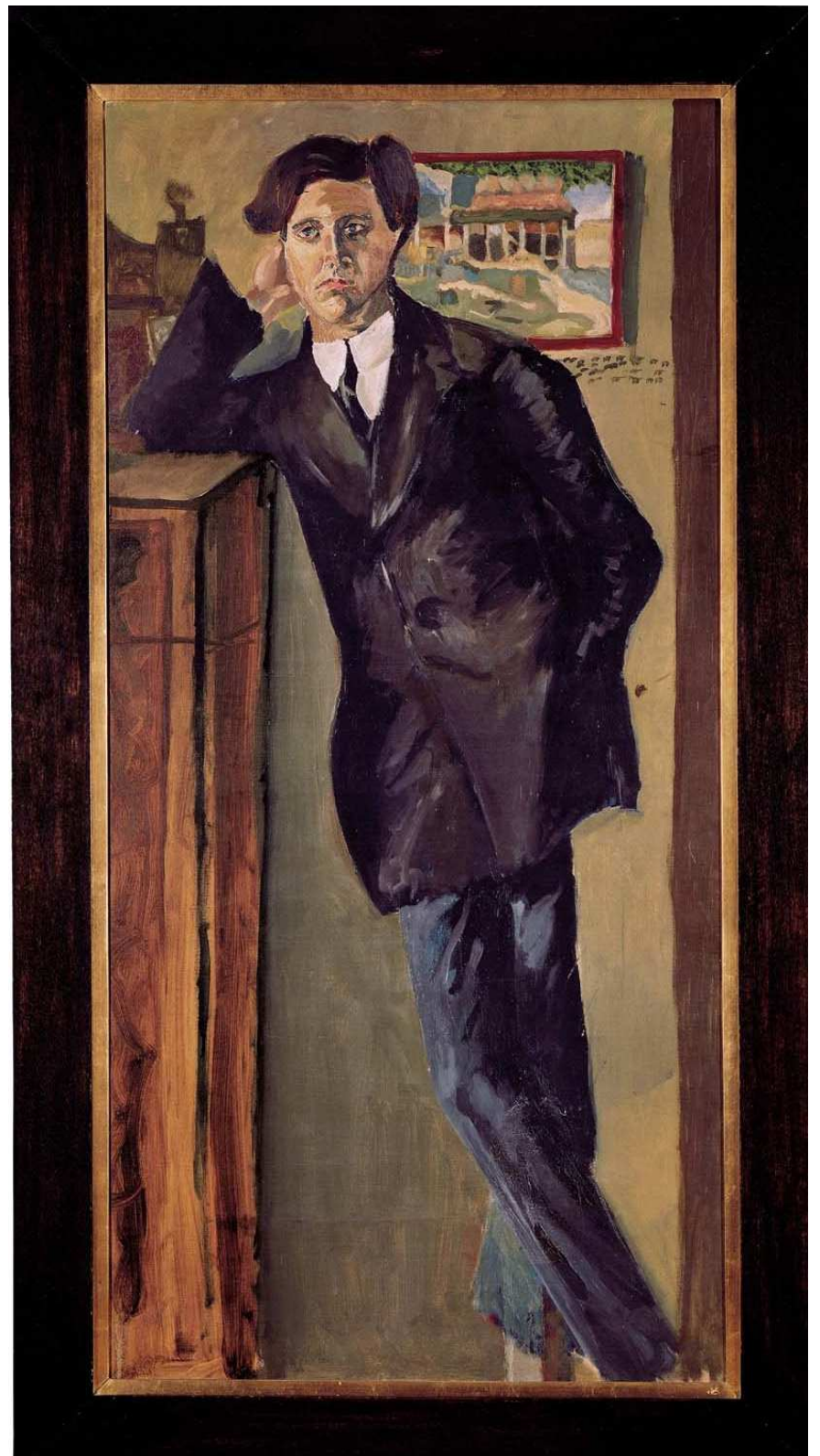


1. Fagott



Alban Berg

Sieben Frühe Lieder

auf Texten von Hauptmann, Lenau, Storm, Rilke,
Schlaf, Hartleben und Hohenberg

I. Nacht (Carl Hauptmann)*Sehr langsam* (♩ = ca. 48)

Measures 1-6 of the piece. The key signature is two sharps (F# and C#) and the time signature is 4/4. The music begins with a half note G3, followed by a quarter note A3, and a dotted half note B3. Measures 2 and 3 repeat this pattern. Measure 4 has a whole rest. Measure 5 has a half note G3. Measure 6 has a half note A3, followed by a quarter note B3, and a dotted half note C4. Dynamics include *pp*, *ppp*, and *mf*. There are accents and a *poco espr.* marking.

rit. . . a tempo

Measures 7-11. Measure 7 starts with a quarter note G3, followed by a quarter rest, a quarter note A3, and a quarter note B3. Measure 8 has a half note C4. Measure 9 has a half note B3. Measure 10 has a half note A3. Measure 11 has a half note G3, followed by a quarter note F#3, and a dotted half note E3. Dynamics include *pp*, *poco f*, and *p*. There are accents and a *poco* marking.

rit. (molto) a tempo poco rit. a tempo rall. . . . a tempo

Measures 12-20. Measures 12-14 have whole rests. Measure 15 has a quarter note G3, followed by a quarter note F#3, and a quarter note E3. Measure 16 has a quarter note D3. Measure 17 has a quarter note C3. Measure 18 has a quarter note B2. Measure 19 has a quarter note A2. Measure 20 has a quarter note G2. Dynamics include *mp* and *p*. There are accents and a *poco* marking.

rit. . . Etwas langsamer **Ganz breit***quasi a tempo**Wie zu Anfang*

Measures 21-27. Measures 21-23 have whole rests. Measure 24 has a quarter note G3, followed by a quarter note F#3, and a quarter note E3. Measure 25 has a quarter note D3. Measure 26 has a quarter note C3. Measure 27 has a quarter note B2. Dynamics include *pp*, *ppp*, and *sf*. There are accents and a *poco* marking.

Etwas zunehmend.

Measures 28-32. Measure 28 has a quarter note G3, followed by a quarter note F#3, and a quarter note E3. Measure 29 has a quarter note D3. Measure 30 has a quarter note C3. Measure 31 has a quarter note B2. Measure 32 has a quarter note A2. Dynamics include *pp* and *(pp)*. There are accents and a *poco* marking.

Zeit lassen **Wieder abnehmend quasi Tempo I.**

Measures 33-35. Measures 33-34 have whole rests. Measure 35 has a quarter note G3, followed by a quarter note F#3, and a quarter note E3. Dynamics include *pp*. There are accents and a *poco* marking.

II. Schilflied (Nikolaus Lenau)

Mäßig bewegt (♩ = ca. 108)

I. Geigen

1. Horn

rit.

A tempo (II) aber etwas langsamer
(♩ = ca. 96)

9

pp *p* *p cresc.*

tranquillo

18

f espr. *p* *p cresc.* *dim.*

rit. *(molto) a tempo (II)*

25

mp *poco f*

III. Die Nachtigall (Theodor Sturm) — TACET

IV. Traumgekrönt (Rainer Maria Rilke) — TACET

19

1. Horn

p espr. *dim.*

V. Im Zimmer (Johannes Schlaf)

Leicht bewegt (♩ = ca. 69) *Etwas fließender*

1. Klarinette

pp *pp* < >

poco rit. - - (molto) *a tempo* *Zeit lassen! zurück in's Tempo I*

6

4 3 2 6

VI. Liebesode (Otto Erich Hartleben)

Sehr langsam (♩ = ca. 46) *rit.* , *a tempo*

1. Klarinette

pp *pp* *pp* < (p) >

poco rit.)

7

< > < (poco) > *pp* < (p) > *poco cresc.* - - -

a tempo

poco a poco cresc. - - -

13

pp < (p) > < > < > < > < > < > < >

poco rit. - - - (kurz) - *quasi a tempo*

19

< > < > < > (f) < > *mf* < > *p*

VII. Sommertage (Paul Hohenberg)

Schwungvoll (♩ = ca. 60)

Violoncelli (get.) *arco* *arco*
mp

p *fp* *p* *espr.*

rit. . . . *a tempo**poco a poco accel.*

8

dim. pp

*allargando**poco pesante a tempo*

15

16 I. Geigen

p *f*

rit. . . . *a tempo, ma molto rubato**(rit. accel. rit. accel. . . rit. . . .)**Tempo I*

24

mf *poco marc.* *pp* *p* *mf*

*poco accel.**allargando**a tempo*

31

mp *cresc.* *f* *p*