

SLEEPY LAGOON

words by *Jack Lawrence*
music by *Eric Coates*



CHAPPELL
E. CO. INC.
RKO BUILDING
ROCKEFELLER
CENTER-N.Y.C.

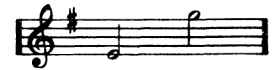
CHAPPELL
MADE IN U.S.A. ECO-170-10808

THE GREAT ENGLISH BALLAD OF TODAY

No 1 IN Eb



No 2 IN G



I'll Walk Beside You

Words by
EDWARD LOCKTON

Music by
ALAN MURRAY

Slowly (*with expression*)

VOICE

Piano

mp

ten.

mp *mp*

I'll

walk be - side you through the world to - day, While

mf

mp

dreams and songs and flow - ers bless your way, I'll look in -

allarg.

allarg.

Copyright MCMXXXVI by Chappell & Co., Ltd.

CHAPPELL & Co. INC., RKO Building, Rockefeller Center, New York, N.Y.

Sleepy Lagoon

Words by
JACK LAWRENCE

Music by
ERIC COATES

Tempo di Valse lento

Piano

mf

The first system of the piano introduction is in 3/4 time. It features a melody in the right hand with triplets and a bass line in the left hand. The dynamic is marked *mf*.

p *cresc.* *dimin.*

The second system continues the piano introduction. It includes dynamic markings for *p* (piano), *cresc.* (crescendo), and *dimin.* (diminuendo).

Refrain (*slowly, with expression*)

mp

A sleep-y la - goon, a trop-i-cal moon and two on an is - land, -

The first line of the refrain is in 3/4 time. The vocal melody is in the right hand, and the piano accompaniment is in the left hand. The dynamic is marked *mp*. Chord diagrams for C major and Am7 are shown above the staff.

- A sleep-y la - goon and two hearts in tune in some lull-a - by - land. -

The second line of the refrain continues the melody. Chord diagrams for Am7, C major, Am7, and D9 are shown above the staff.

* Names of chords for Ukulele and Banjo.
Symbols for Guitar.

C-1075-3

Copyright MCMXXX by Chappell & Co. Ltd.
Copyright MCMXL by Chappell & Co. Ltd.

International Copyright Secured

Made in U. S. A.

ALL RIGHTS RESERVED Including public performance for profit.

Any arrangement or adaptation of this composition without the consent of the owner is an infringement of copyright.



G7₉ D7₉ G7₉ D7₉ Emi.₉ Bb7₉

The fi - re - flies gleam, re - flects in the stream, they spark - le and shim - mer,

A star from on high, falls out of the sky, and slow - ly grows

dim - mer. The leaves from the trees, all dance in the

mf *cspr.*

breeze, and float on the rip - ples; — We're deep in a spell, as night - in - gales

C+^o F6 D7

tell of ro-ses and dew; The mem-o-ry of this mo-ment of

C+^o C^o A7

love, will haunt me for - ev - er. A trop - i - cal

rall. e dim.

Dmi.7 Fmi.6 Emi. Dmi.7 G+ C 1. Ab7 G7

moon, a sleep-y la - goon and you! A sleep-y la -

rall. *mp a tempo*

2. C

you.

mf *poco* *allargando* *Sva...* *p*

SONGS FROM
"LET'S FACE IT"
 by
COLE PORTER

Ev'rything I Love

Refrain (*slowly, with expression*)

You are to me ev - 'ry

A Little Rumba Numba

A lit-tle rum - ba num - ba Down Ar-gen-ti - na way,

Ace In The Hole

Refrain (*slower but in strict rhythm*)

Sad times — May fol - low your tracks, —

Farming

Refrain (*faster and brigiter*)

Farm - ing, — that's the fash - ion, Farm - ing, —

You Irritate Me So

Refrain (*gracefully*)

You're the fly in my oint-ment, You're the frog in my

Rub Your Lamp

Refrain (*rhythmically but not too fast*)

Rub your lamp, if you want health, Rub your lamp, if

Copyright MCMXLI by Chappell & Co., Inc., N. Y. C.

ALSO AVAILABLE ON RECORDS AND PIANO ROLLS

CHAPPELL
 & CO. INC.
 RKO BUILDING
 ROCKEFELLER
 CENTER · N·Y·C
CHAPPELL
 MADE IN U S A E·CO·LTD·LONDON