

I. Gg

Kaiser Walzer

instr. v. A. Schönberg

v. Joh. Strauß

Introduction

Langsames Marschtempo

3 dolce
pp
7-8
9 pizz
10
11 arco
pp
12
13
tr
14
tr
15 #
pp
16 tr
17 tr
18
19
pp
20
V 21
22 Cantabile
p
23
24
25 tr
26
27
28 #
tr
29
30
31
32
33
34
35
p
cresc.
mf
36
37
38
39
40
41
42
43
44
45
tr calando poco...
pp
46 tr
47
48
49
rit.
pp



Arnold Schönberg
Mödling bei Wien
Bernhardg. 6.-Tel. 118.

Calando

51 *pizz* *p* 52 *pp* 53 *arco* 54 55 *pppp* poco a poco accel.

56 *ppp* 57 58 59

60 61 62

63 *p* *cresc.* 64 65

66 *mf* *Calando* 67 68 69 *p* 70 71 72 73 *rit.* $\frac{3}{4}$ $\frac{4}{4}$ $\frac{5}{4}$

74 *No 1 Walzer* 75 76 *mp* 77 78 79

80 81 82 83 84

85 86 87 88 89 *mf*

90 *p* 91 100 *f* 101 102

103 104 105 106 107 *p.* 108 109 110

Handwritten musical score for Violin I, measures 111-173. The score is written on ten staves in treble clef. It includes various musical notations such as notes, rests, slurs, and dynamic markings. The key signature changes from one flat to two flats at measure 150. The score concludes with a double bar line and a repeat sign.

Measures and dynamics:

- 111: *ff*
- 112-114: *sf*
- 116-120: *pp*
- 126-130: *pppp*
- 131-135: *mf*
- 136-140: *ppp*
- 141-145: *ff*
- 146-150: *p*
- 151-156: *p*
- 157-162: *p*
- 163-169: *mf*
- 170-173: *p*

Handwritten musical score on ten staves, numbered 176 to 229. The score includes various musical notations such as notes, rests, and dynamic markings like ppp, sf, f, and mf. It also features section markers like "No 3" and "Eingang".

176 ppp

181 sf

185

189 sf

193 f

196 Eingang

197 No 3

202 mf

207 sf

211 sf

215

220

225 sf

rit. Tempo

Handwritten musical score for a single staff, measures 230-264. The notation includes various rhythmic values, dynamics (ff, f, p), and articulation marks. Measure numbers are written above the notes.

Measures 230-234: *rit.* section with dynamics *ff* and articulation marks 1, 2, 3, 4.

Measures 235-239: Continuation of the *rit.* section.

Measures 240-244: Continuation of the *rit.* section.

Measures 245-249: Continuation of the *rit.* section, ending with a fermata.

Measures 250-254: Continuation of the *rit.* section, ending with a fermata.

Measures 255-258: Continuation of the *rit.* section, ending with a fermata.

Measures 259-261: Continuation of the *rit.* section, ending with a fermata.

Measures 262-264: *Tempo* section, starting with a fermata. Measure 264 is marked *Eingang*. Measure 265 is marked *3 pes.* and ends with a double bar line and a slash.

Four empty musical staves for additional notation.

No 4

rit.

Tempo

267 *mf* *f* 268 269 270

Handwritten musical notation for measures 267-270. Measure 267 starts with a *mf* dynamic and a *f* dynamic marking. Measures 268, 269, and 270 contain rhythmic patterns with accents.

271 *mf* 272 273 274 275 *sf*

Handwritten musical notation for measures 271-275. Measure 271 starts with a *mf* dynamic. Measure 275 ends with a *sf* dynamic marking.

276 277 278 275 276 *tr*

Handwritten musical notation for measures 276-278. Measure 276 includes a trill (*tr*) marking. Measure 275 is written below the staff.

277 *tr* I^o 278^a 279^a *mf* *f* II^o 278^b 279^b

Handwritten musical notation for measures 277-279. Measure 277 includes a trill (*tr*) and first ending bracket (I^o). Measure 278 has two endings (278^a and 278^b). Measure 279 has two endings (279^a and 279^b). Dynamics *mf* and *f* are present.

280 *mf* 281 282 283 284 285

Handwritten musical notation for measures 280-285. Measure 280 starts with a *mf* dynamic. Measures 281-285 contain a melodic line with various note values.

286 *sf* 287 288 289 290

Handwritten musical notation for measures 286-290. Measure 286 starts with a *sf* dynamic. Measures 287-290 contain a melodic line.

291 292 293 294 295 296 *mf*

Handwritten musical notation for measures 291-296. Measure 295 includes a *mf* dynamic marking. Measures 291-296 contain a melodic line.

297 298 299 300 301

Handwritten musical notation for measures 297-301. Measures 297-301 contain a melodic line.

302 *sf* 303 304 304^a *rit.*

Handwritten musical notation for measures 302-304. Measure 302 starts with a *sf* dynamic. Measure 304 has an ending (304^a). Measure 304 ends with a *rit.* marking.

... *rit.* 305 *sf* 306 307 308 309 *Tempo*

Handwritten musical notation for measures 305-309. Measure 305 starts with a *rit.* marking and a *sf* dynamic. Measure 309 ends with a *Tempo* marking.

310 *mf* 311 312 313 314 *sf*

Handwritten musical notation for measures 310-314. Measure 310 starts with a *mf* dynamic. Measure 314 ends with a *sf* dynamic marking.

315 316 317 318 319

Handwritten musical notation for measures 315-319. Measures 315-319 contain a melodic line.

Coda

Handwritten musical score for Coda, measures 320-384. The score is written on ten staves in treble clef. It includes various musical notations such as notes, rests, accidentals, and dynamic markings. The piece concludes with a double bar line and a fermata.

Measures and markings include:

- 320: *tr*, *mf*
- 322-3: *mf*
- 324: *p*
- 325: *p*
- 326: *p*
- 327: *cresc.*, *fp*, *cresc*, *fp*, *fp*
- 329: *fp*
- 330: *fp*
- 331: *fp*
- 332: *fp*
- 333: *fp*
- 334: *cresc.*
- 335: *cresc.*
- 336: *cresc.*
- 337: *cresc.*
- 338: *cresc.*
- 339: *rit* (dashed line), *ff*
- 340: *ff*
- 341-2: *ff*
- 343: *ff*
- 344: *ff*
- 345: *rit* (dashed line), *mp*
- 346: *mp*
- 347: *mp*
- 348: *mp*
- 349: *mp*
- 350: *mp*
- 351: *mp*
- 352: *mp*
- 353: *mp*
- 354: *mp*
- 355: *mp*
- 356: *mp*
- 357: *p*, *ff*
- 358: *p*
- 359: *p*
- 360: *p*
- 361: *p*
- 362: *ff*
- 363: *ff*
- 364: *ff*
- 365: *ff*
- 366: *ff*
- 367: *ff*
- 368: *ff*
- 369: *ff*
- 370: *ff*
- 371: *ff*
- 372: *ff*
- 373: *ff*
- 374: *ff*
- 375: *ff*
- 376: *f*
- 377: *p*
- 378: *p*
- 379: *rit* (dashed line), *ff*
- 380: *ff*
- 381: *ff*
- 382: *ff*
- 383: *ff*
- 384: *rit* (dashed line), *dim.*



--- (rit) ---
 385 *pizz* *arco* 387 388 *fp* 399

390 391 392 393 394

395 396 397 398 399

400 401 402 403 404

405 *fp* 406 *f* 407 *fp* 408 *f* 409 *fp*

410 411 412 *f*

413 414 415 416

417 *arco* 418 419 420 *mf* 421 *sf rit*

422 *Tempo* 423 424 425

--- (rit) --- *sf* ---

426 427 428 429

430 431 432 433 434

435 436 437 438 439 *ff*

440 *f* 441 *f* *f* 442 *f* 443 *f* 444 *f*

445 446 447 448 449

450 451 452 453

454-57 *Langsamer* 456 *pp* 1 457 2 458 3

459 460 461 462 *Molto rit. . . .*

463 *(rit)* 464 465 466 467 468 469 *pp*

470 *Langsam* 471 472 473 474 475 *pp*

476 477 478 479 480 481 *pp*

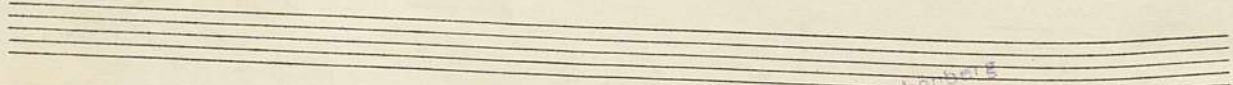
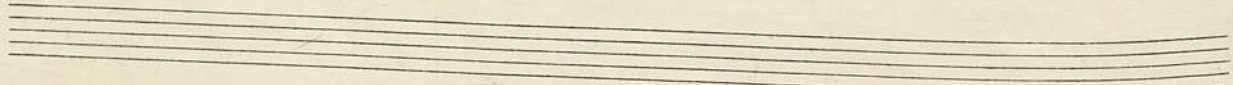
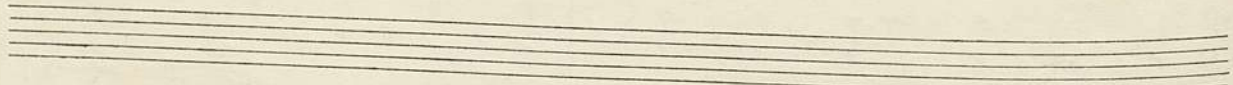
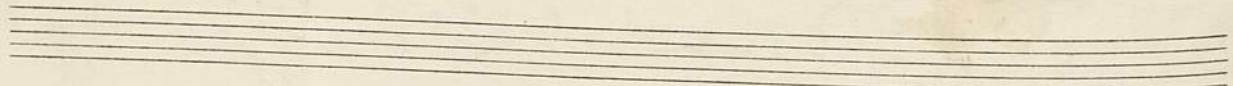
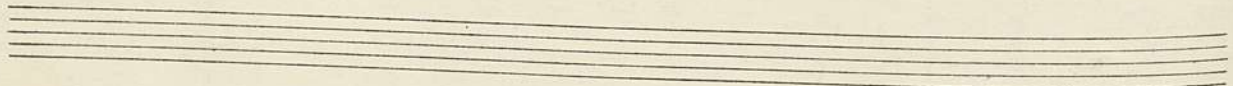
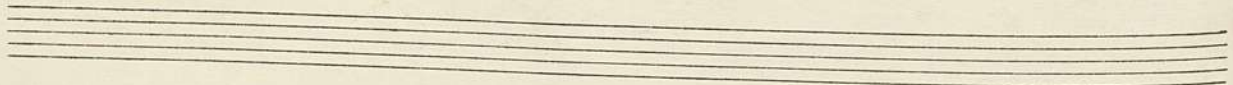
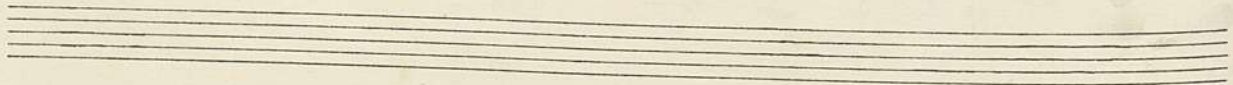
482 483 484 485 486 487 *pp*

488 489 490 491 492 *f*

493 494 495 496 497 498 499 *ff*

500 501 502 503 504 505 506 507 508





Arnold Schönberg
Mödling bei Wien
Bernhardg. 6.-Tel. 118.

