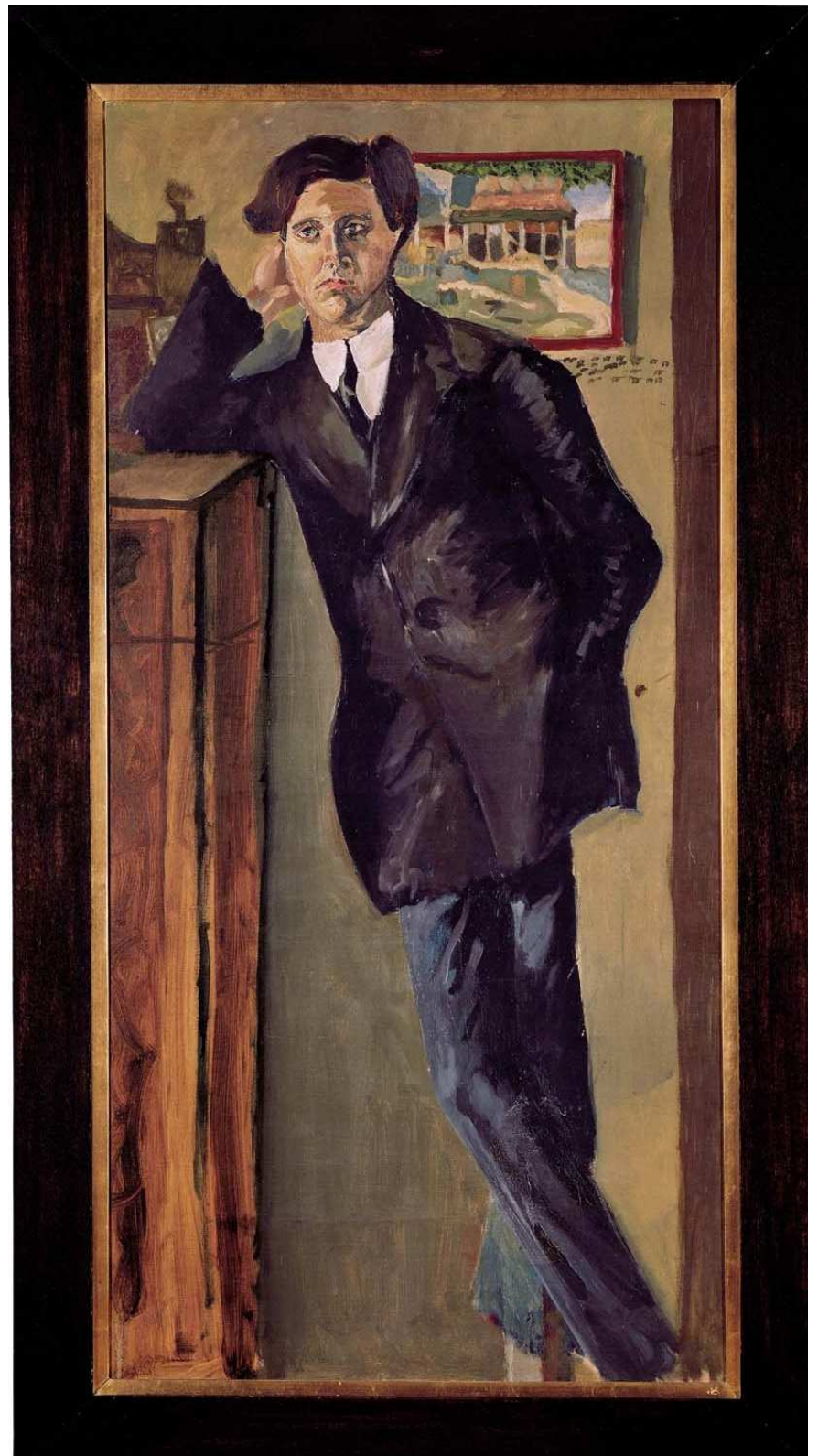


2. Horn (F)



Alban Berg

Sieben Frühe Lieder

auf Texten von Hauptmann, Lenau, Storm, Rilke,
Schlaf, Hartleben und Hohenberg

I. Nacht (Carl Hauptmann)*Sehr langsam* (♩ = ca. 48)

gestopft +
pp
offen
pp
poco cresc. -

*rit. - - a tempo**rit. (molto)*

7
poco f > pp >

a tempo poco rit. a tempo rall. - a tempo rit. - Etwas langsamer

13
2 3 2 1.Horn

Ganz breit quasi Wie zu Anfang Etwas zunehmend.

23
gestopft +
p pp pp fp pp p
nimmt Dpf.
4
poco cresc. - - -

Zeit lassen Wieder abnehmend - - - quasi Tempo I.

32
(mp) (mf) 3

II. Schilflied (Nikolaus Lenau) — TACET

III. Die Nachtigall (Theodor Sturm) — TACET

Musical score for 'Die Nachtigall' (Theodor Sturm). The score is in G major and 3/4 time. It begins with a treble clef and a key signature of one sharp. The first system shows measures 15, 10, and 14. The second system starts at measure 41 and features two staves: 'I. Geigen' (Violin I) and 'Violoncelli' (Violoncelli). The Violin I part is marked 'arco' and 'f' (forte), while the Violoncelli part is marked 'espr.' (espressivo) and 'mp' (mezzo-piano). Dynamics range from 'f' to 'pp' (pianissimo).

IV. Traumgekrönt (Rainer Maria Rilke)

Musical score for 'Traumgekrönt' (Rainer Maria Rilke). The score is in G major and 4/4 time. It begins with a tempo marking 'Langsam (♩ = ca. 46)'. The first system is for 'II. Geigen' (Violin II) with a 'mit Dpf.' (with double pedal) instruction. Dynamics include 'pp' (pianissimo), 'p' (piano), and 'mf' (mezzo-forte). The second system starts at measure 9 and includes tempo markings '(molto) a tempo', 'poco accel. poco rit.', and 'a tempo'. The third system starts at measure 17 and includes '(m. Dpf.)', 'poco accel.', 'rit. (molto) a tempo', and 'ten.' (tension). Dynamics include 'p', 'mf', and 'pp'. The fourth system starts at measure 24 and is for '1. Horn' (Horn I), marked 'p' and 'pp'. The score concludes with a double bar line.

V. Im Zimmer (Johannes Schlaf)

Leicht bewegt (♩ = ca. 69)

Etwas fließender

ohne Dpf.

1. Klarinette 8

Oboe 8

poco rit. - - - - (*molto*) - - *a tempo*

9

mf *poco f* *mf*

Zeit lassen! zurück in's Tempo I

nimmt Dpf.

15

2 1. Klarinette 8

p (*m. Dpf.*) *p* *pp*

VI. Liebesode (Otto Erich Hartleben)

Sehr langsam (♩ = ca. 46)

rit. , *a tempo*

mit Dpf.

1. Klarinette 8

pp *pp* *pp* < (*p*) >

poco rit.)

7

pp *poco cresc.* *molto dim.*

a tempo *poco a poco cresc.* - - - -

13

pp

