

to JANE BELO

Concerto for Piano

with Wind Octet acc.

(1928)

I

Colin McPhee

(1900-1964)

Oboe

Allegretto $\text{♩} = 96$

4 5 10 4

15 2

20 *f*

25 30 *f ff*

35 5 4 4 5 4 4

40 Più mosso $\text{♩} = \text{♩}$ *f marcato*

45 *ff ritmico non legato e molto accentuato*

50

55 Più tranquillo

decresc. *ppp dolce*

60 *rall.* *calmato* 65 **Tempo moderato**
 (♩ = 96)

70 75

80 85

90 95 **Animato** ♩ = 126

♩ = 126 100 105 110

115 120

125 130

135

140 145

150



155



160



165

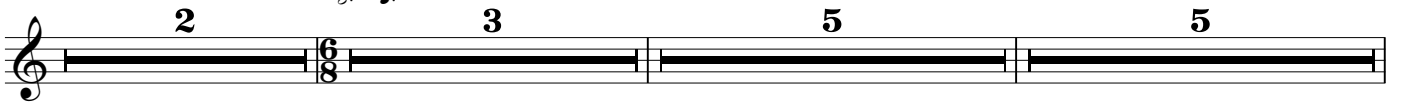


170



175

180



185

190

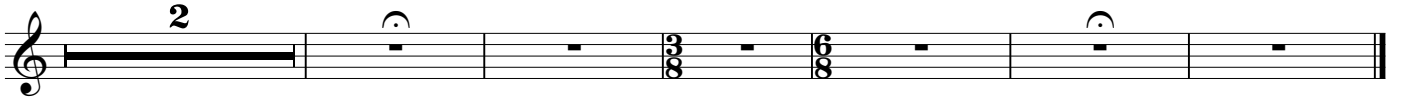
195



200

205

210



215

35

40

animando

45

Tempo primo

50

55

60

Largo

III

CODA

Energico ♩ = 160

5 *ff*

10

15

20 *secco*

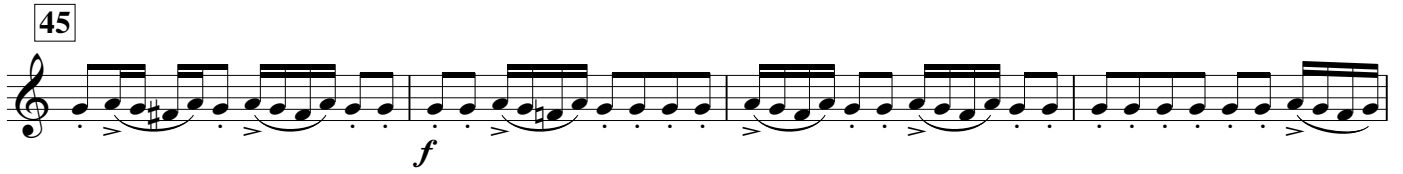
25 *sempre ff*

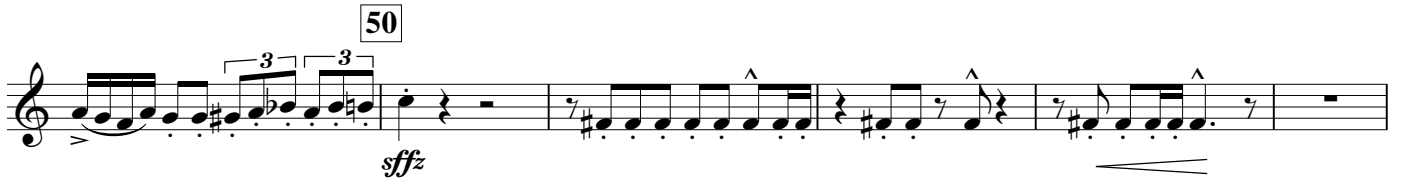
30 *ff*

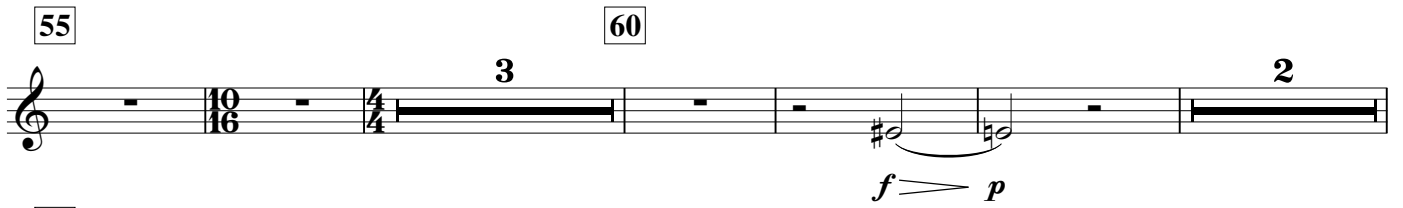
35 *f*

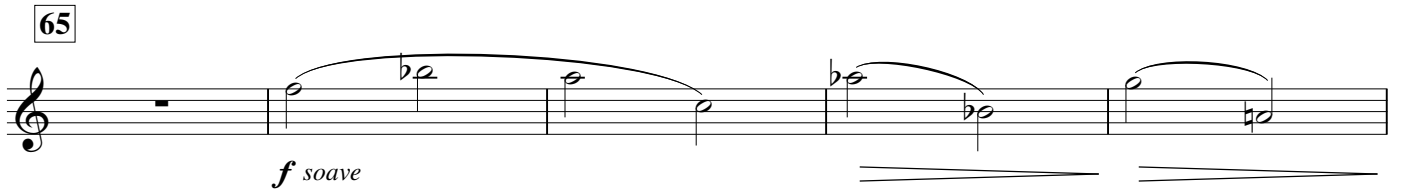
40 *sfz sfz sfz*

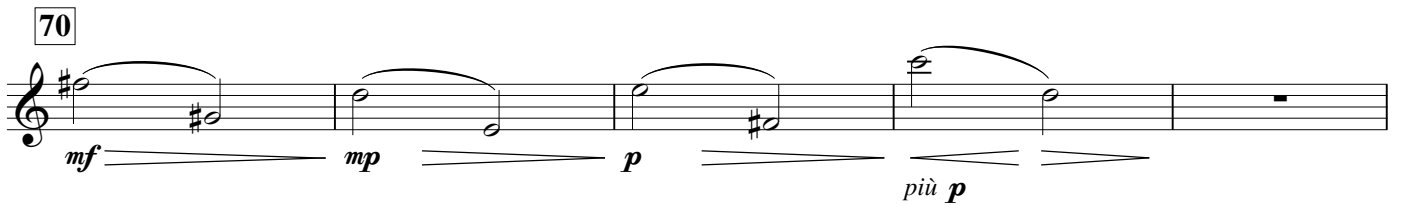
sfz f p

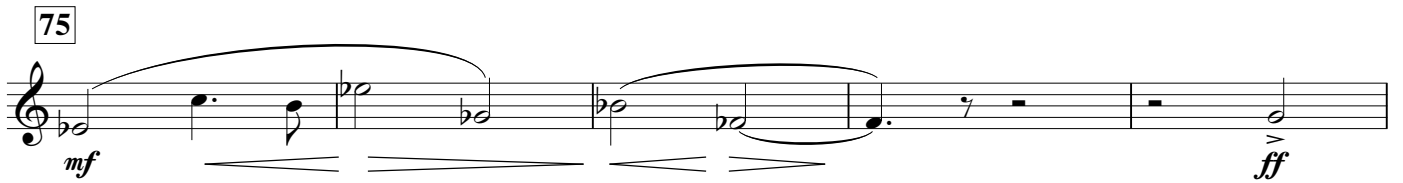
45  *f*

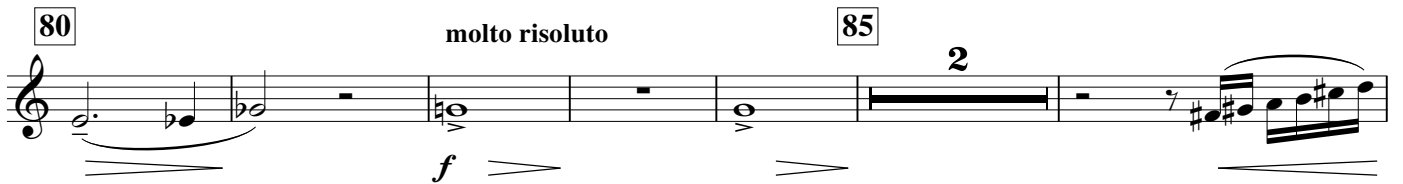
50  *sfz*

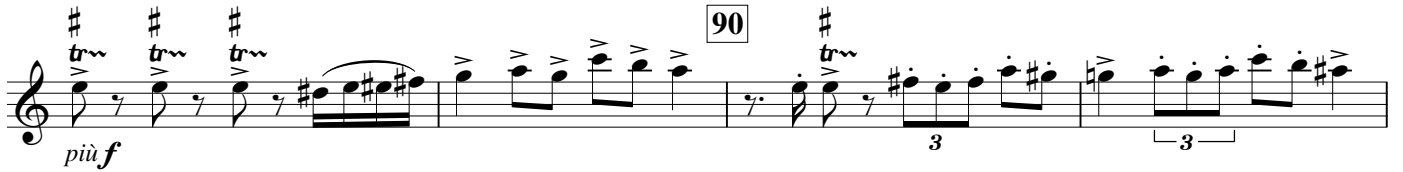
55  *f > p*

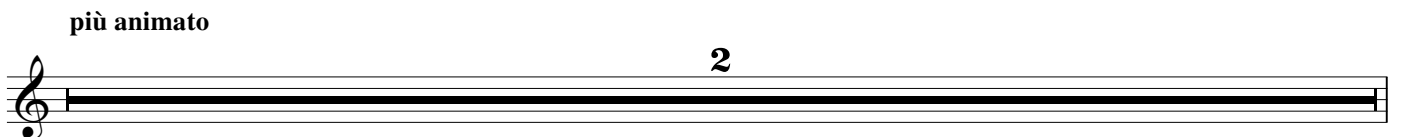
65  *f soave*

70  *mf mp p più p*

75  *mf ff*

80 *molto risoluto*  *f*

85  *più f*

più animato  *2*

95

ff

100

f sfz sfz

105

f molto fff secco

110

ff secco f

115

Più tranquillo-sereno

120

f più f

125

fff ff poco rall.

poco rall. A tempo

130

sfz sfz

Subito più animato

♩ = 152

135

detache mais pas staccato staccato

140

fff