

Sinfonietta La Jolla

1st Oboe

B. Martinu

I

Poco Allegro (♩ = 104)

The musical score for the 1st Oboe part of 'Sinfonietta La Jolla' by Bohuslav Martinu is written in 4/4 time with a tempo of Poco Allegro (♩ = 104). The score consists of ten staves of music. The first staff begins with a treble clef and a 4/4 time signature. The music is characterized by a mix of eighth and sixteenth notes, often beamed together. Dynamics range from piano (p) to forte (f), with a 'meno' marking indicating a change in dynamics. There are four numbered first endings (1, 2, 3, 4) and a second ending (2) at the end of the piece. The key signature changes from one flat (B-flat) to one sharp (F-sharp) during the piece.

Ob. 1.

Handwritten musical score for Oboe 1, consisting of ten staves. The notation includes various notes, rests, and performance markings. The first staff begins with a *mf* dynamic. The second staff contains a circled measure and a boxed measure labeled '5'. The third staff has a circled measure and a boxed measure labeled '8'. The fourth staff contains boxed measures labeled '6', '7', and '8', with a 'VI. o' marking. The fifth staff has a circled measure and a boxed measure labeled '9'. The sixth staff has a circled measure and a boxed measure labeled '10'. The seventh staff has a circled measure and a boxed measure labeled '11'. The eighth staff has a circled measure and a boxed measure labeled '11'. The ninth staff has a circled measure and a boxed measure labeled '11'. The tenth staff has a circled measure and a boxed measure labeled '11'. The score includes various dynamics such as *mf*, *f*, *p*, and *sfz*, as well as articulation marks like accents and slurs. The notation is in a single system with ten staves.

Ob. I.

Handwritten musical score for Oboe I, measures 1-19. The score is written on ten staves, with measures 1-5 on the first staff, 6-10 on the second, 11-15 on the third, 16-17 on the fourth, and 18-19 on the fifth. The music features various dynamics including *p*, *mf*, *f*, and *sfz*, and includes performance markings such as *rit.* and *(meno)*. Measure numbers 1, 2, 5, 13, 14, 15, 16, 17, 18, and 19 are boxed. The key signature has one flat (B-flat), and the time signature is 3/4. The notation includes eighth notes, quarter notes, and half notes, often beamed together. There are also some rests and fermatas. At the bottom of the page, the number "B&H 17499" is printed.

Ob. 1.

Handwritten musical score for Oboe 1, measures 20-24. The score is written on ten staves, with two staves per measure. The key signature is one flat (B-flat major or D minor). The time signature is 3/4. The score includes various musical notations such as notes, rests, slurs, and dynamic markings. Measure numbers 20, 21, 22, 23, and 24 are boxed in the first staff of each measure. Dynamic markings include *p*, *mf*, *f*, *sfz*, and *f*. Fingerings are indicated by numbers 1-5 above notes. The score concludes with a double bar line and a repeat sign at the end of measure 24.

Ob. 1

Handwritten musical score for Oboe 1, measures 25-27. The score consists of six staves. Measure 25 is marked with a boxed '25'. Measure 26 is marked with a boxed '26'. Measure 27 is marked with a boxed '27'. The music includes various notes, rests, and dynamic markings such as *f*, *mf*, *poco f*, and *f*. There are also some handwritten annotations like 'cl.' and 'Fl.'.

Handwritten musical score for Oboe 1, measures 8-11. The score consists of four staves. The tempo is marked *Largo* and *Andante moderato*. Measure 8 is marked with a boxed '8'. Measure 9 is marked with a boxed '9'. Measure 10 is marked with a boxed '10'. Measure 11 is marked with a boxed '11'. The music includes various notes, rests, and dynamic markings such as *p*, *cl.*, and *Fl.*. There are also some handwritten annotations like '10' and '2'.

Ob. I.

Musical score for Ob. I, measures 9-14. The score is written on six staves. Measure 9 has a *tr* marking. Measure 10 has a circled '10' and a '3' above it. Measure 11 has a circled '11' and a '6' above it. Measure 12 has a circled '12' and a *mf* dynamic. Measure 13 has a circled '13' and a *poco f* dynamic. Measure 14 has a circled '14' and a *Largo* tempo marking. The score includes various musical notations such as slurs, accents, and dynamic markings.

Musical score for Ob. I, measures 15-17. The score is written on three staves. Measure 15 has a *poco f* dynamic. Measure 16 has a circled '1' and a *f* dynamic. Measure 17 has a circled '1' and a *f* dynamic. The score includes various musical notations such as slurs, accents, and dynamic markings.

ALLEGRO (♩ = 126)

III



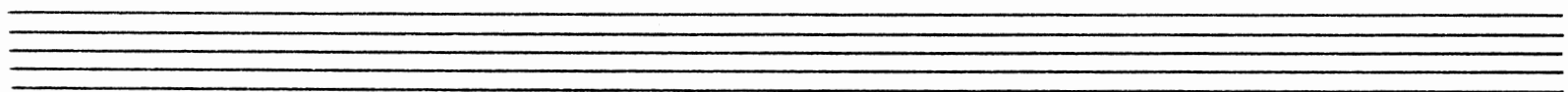
Ob. I.

Handwritten musical score for Oboe I, measures 12-19. The score is written on ten staves. The key signature has two flats (B-flat and E-flat). The time signature is 3/4. The music features various dynamics including *p*, *mf*, and *f*. Measure numbers 12, 13, 14, 15, 16, 17, 18, and 19 are indicated in boxes. Measure 16 contains a first ending bracket with a '2' and a second ending bracket with a '10'. Measure 17 contains a first ending bracket with a '17' and a second ending bracket with an '18'. Measure 18 contains a first ending bracket with a '1' and a second ending bracket with an '18'. Measure 19 contains a first ending bracket with a '19' and a second ending bracket with an '19'. The notation includes eighth and sixteenth notes, rests, and slurs.



Ob. I.

Handwritten musical score for Oboe I, measures 20-32. The score is written on a single staff in treble clef. It begins with a key signature of one sharp (F#) and a 2/4 time signature. The music features various dynamics including *f*, *P*, *Poco Meno*, *Fl.*, *(Piano)*, *VI.*, and *accel.*. Measure numbers 20 through 32 are boxed. Performance instructions include *Poco Meno* starting at measure 24, *(Piano)* starting at measure 26, and *accel.* starting at measure 31. The score concludes with a double bar line at the end of measure 32.



ob. I.

*b*

*mf*

*End.*