

Tuba

Pequeña Suite

En estilo antiguo

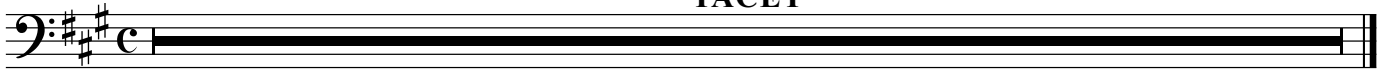
Edición:
Ezequiel Diz

I
Invocación

Humberto de Nito
(1891-1957)

Moderatamente quasi adagio

TACET



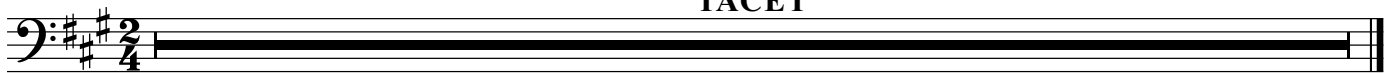
II

Gavotta

(Dans l'estyle ancienne)

Tempo di gavotta ♩=84

TACET



III

L'Oriente Exotique

(Marcha Tártara)

Moderato (♩=66)

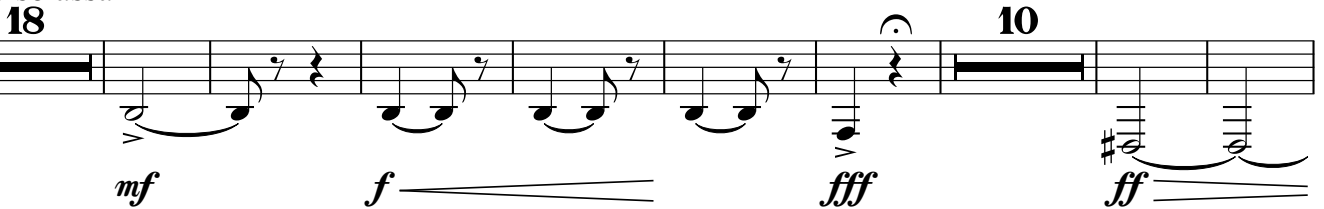


21 meno mosso

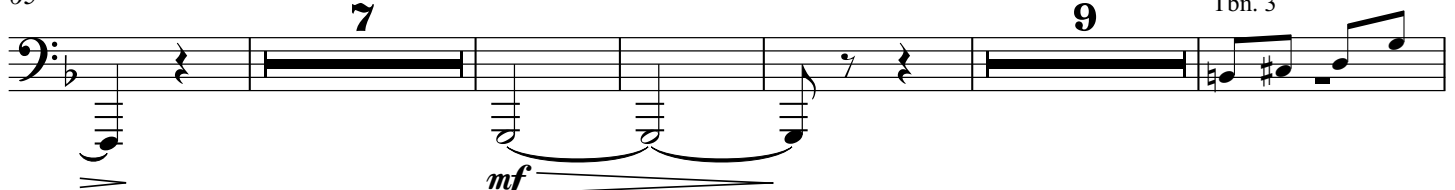
rall.



29 deciso assai



65



86



105

Musical staff 105-112 in bass clef. It contains a sequence of eighth notes with accents. The dynamic markings *fff* appear at the beginning and in the middle of the staff.

Musical staff 113-133 in bass clef. It features a triplet of eighth notes marked with a '3' and a '3' above it, followed by a rest. The dynamic marking *meno* is written above the staff. A measure with a whole note and a fermata is marked with a '14' above it. The staff concludes with a treble clef and the instruction 'Cor. 1 deciso' above it. The dynamic marking *mf* is placed below the first note of the final measure.

Musical staff 134-141 in treble clef. It begins with a treble clef and a key signature change to one flat. The staff contains a sequence of eighth notes with accents. The dynamic markings *ff* are placed below the first and fifth notes of the sequence.