

# QUINTETTE INSTRUMENTAL

pour  
FLUTE, VIOLON, ALTO, VIOLONCELLE et HARPE

ALTO

## I

H. VILLA-LOBOS

All<sup>o</sup> non troppo

The musical score for the Alto part is written on ten staves. It begins with a treble clef and a key signature of one sharp (F#). The tempo is marked 'All<sup>o</sup> non troppo'. The dynamics range from *f* (forte) to *p* (piano), with *mf* (mezzo-forte) and *sfz* (sforzando) also used. The score includes five numbered first endings (1-5) marked with circled numbers. The music features various rhythmic patterns, including triplets and slurs, and ends with a final cadence.

Musical score for Alto, measures 6-10. The score is written in bass clef for measures 6-8 and 10, and treble clef for measures 9 and 10. It features various musical notations including triplets, slurs, and dynamic markings such as *sfz p*, *f*, *mf*, and *ff*. Measure numbers 6, 7, 8, 9, and 10 are circled. The key signature has one flat (B-flat).

# II

*Lento* *surd.*

*p* *sfz p*

①

*mf* *p*

② *Più mosso solo*  
*mf*

③ *p*

④ *sfz pp*

*p* *f*

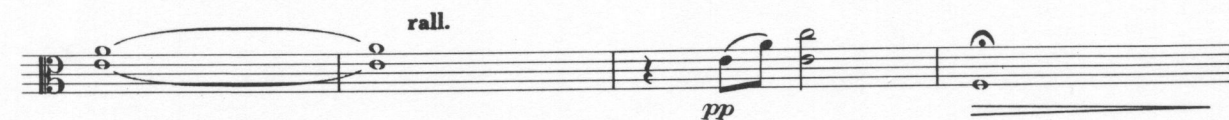
5 a tempo (grandioso)

*mf*

rall.

6 a tempo

7



# III

All<sup>o</sup> poco moderato

*f sfz > mf* *f* *sfzp*

*f* *sfzp*

①

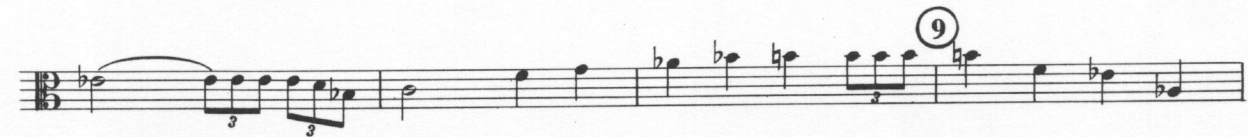
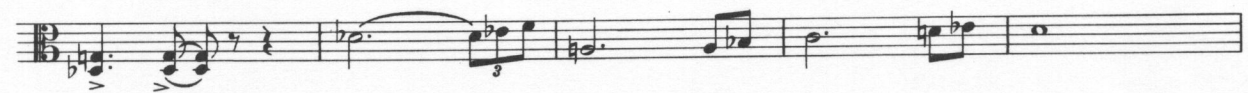
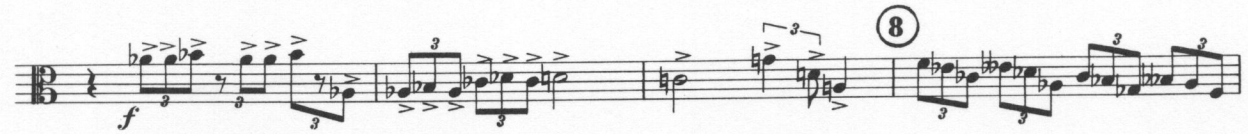
②

③

rall. ④ a tempo 1<sup>o</sup>  
*p*

*pp*

⑤  
*p*



Musical score for Alto, measures 10-14. The score is written in bass clef with a key signature of one flat (B-flat). Measure 10 starts with a circled number 10. The first staff contains notes with dynamics *sfz pp* and *f*. The second staff continues with *sfz p* and *p*. Measure 11 is marked with a circled number 11 and includes the instruction *harm. (La)* with a circled 'o' above it. Dynamics include *pp* and *mf*. Measure 12 is marked with a circled number 12 and features triplets with a dynamic of *f*. Measure 13 is marked with a circled number 13 and includes a circled 'o' above the staff, with dynamics *f* and *ff*. Measure 14 is marked with a circled number 14 and includes a circled 'o' above the staff, with dynamics *f* and *fff*. The score concludes with a double bar line.

M.E. 7854

524695  
525199