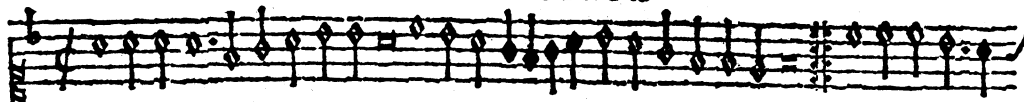
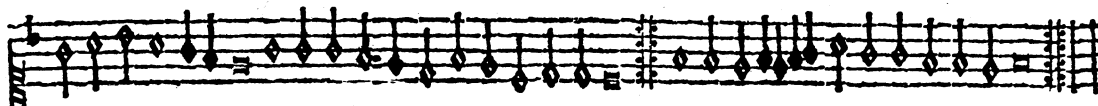


Originalform der vorliegenden Suite nach d'Attaignants Drucken

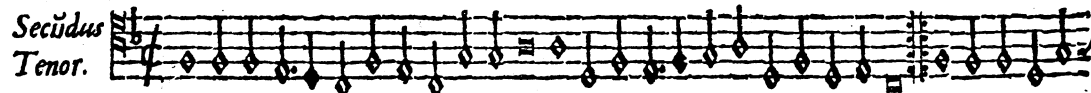
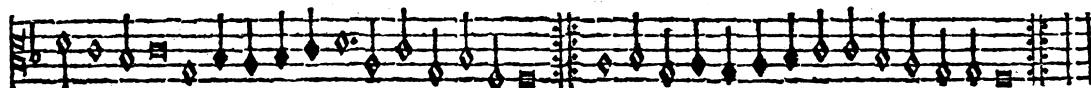
SVPERIVS ET TENOR.



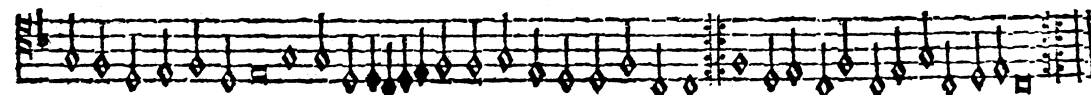
Pauane 3.



Pauane 3.

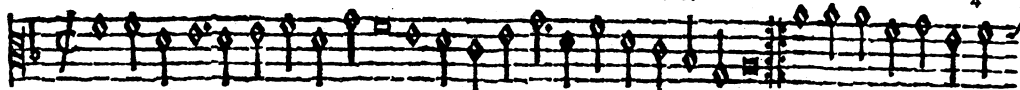


Pauane 3.

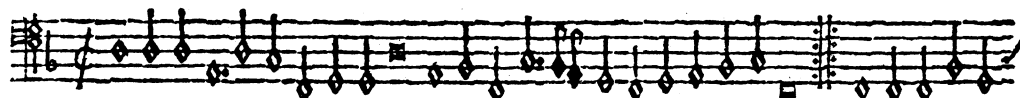
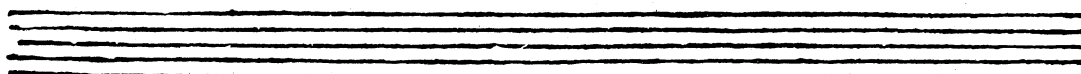
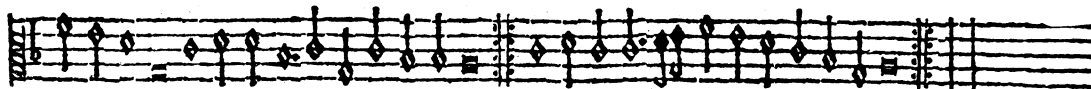


Pauane 3.

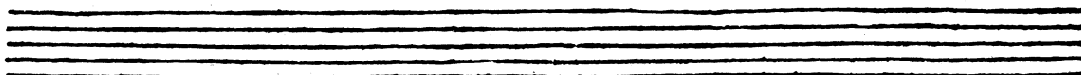
CONTRATENOR ET BASSVS.



Pauane 3.



Pauane 3.



A cinq.

SVPERIVS ET TENOR.

Musical staff for Soprano and Tenor, first system. It features a treble clef, a key signature of one flat (B-flat), and a 3/4 time signature. The melody consists of eighth and sixteenth notes with various rests.

Gaillarde 3.

Musical staff for Soprano and Tenor, second system. It continues the melody from the first system, ending with a double bar line.

Primus
Tenor.

Gaillarde 3.

Musical staff for First Tenor, first system. It features a treble clef, a key signature of one flat, and a 3/4 time signature. The melody is similar to the Soprano and Tenor parts.

Secūdus
Tenor.

Gaillarde 3.

Musical staff for Second Tenor, first system. It features a treble clef, a key signature of one flat, and a 3/4 time signature. The melody is similar to the other parts.

CONTRATENOR ET BASSVS.

Musical staff for Contratenor and Bass, first system. It features a bass clef, a key signature of one flat, and a 3/4 time signature. The melody is similar to the other parts.

Gaillarde 3.

Musical staff for Contratenor and Bass, second system. It continues the melody from the first system, ending with a double bar line.

An empty musical staff consisting of five horizontal lines.

Musical staff for Contratenor and Bass, third system. It features a bass clef, a key signature of one flat, and a 3/4 time signature. The melody is similar to the other parts.

Gaillarde 3.

Musical staff for Contratenor and Bass, fourth system. It continues the melody from the third system, ending with a double bar line.

An empty musical staff consisting of five horizontal lines.

SVPERIVS

Tour dion

Cest grand plaisir

TENOR

Tour dion

CONTRATENOR

Fo. XIX

Tour dion

BASSVS.

Tour dion

SVPERIVS

Brano

Two staves of musical notation for the Soprano part. The first staff begins with a treble clef and a key signature of one flat. The music consists of a series of eighth and sixteenth notes. The second staff continues the melody and includes a double bar line.

Two empty musical staves, likely representing a continuation or a placeholder for another part of the score.

TENOR

Brano

Two staves of musical notation for the Tenor part. The first staff begins with a treble clef and a key signature of one flat. The music consists of a series of eighth and sixteenth notes. The second staff continues the melody and includes a double bar line.

Two empty musical staves, likely representing a continuation or a placeholder for another part of the score.

CONTRATENOR

Fo XXIII.

Brano

Two staves of musical notation for the Contratenor part. The first staff begins with a treble clef and a key signature of one flat. The music consists of a series of eighth and sixteenth notes. The second staff continues the melody and includes a double bar line.

Two empty musical staves, likely representing a continuation or a placeholder for another part of the score.

BASSVS

Brano

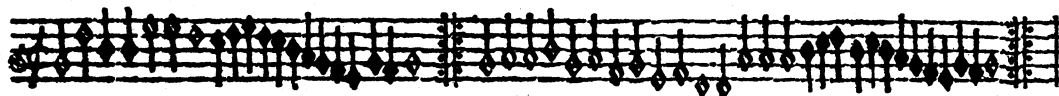
Two staves of musical notation for the Bass part. The first staff begins with a bass clef and a key signature of one flat. The music consists of a series of eighth and sixteenth notes. The second staff continues the melody and includes a double bar line.

Two empty musical staves, likely representing a continuation or a placeholder for another part of the score.

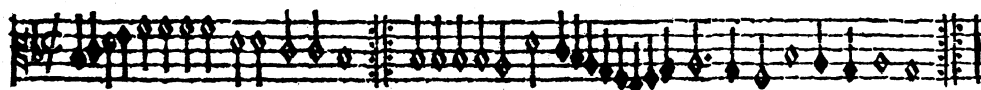
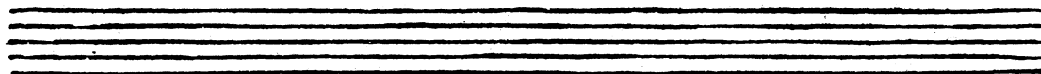
SVPERIVS ET TENOR



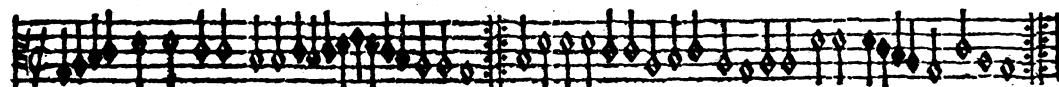
Bransle IIII.



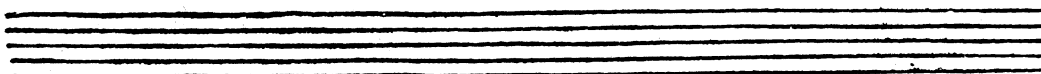
Bransle V.



Tenor IIII.

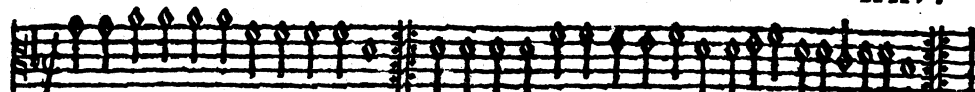


bransle V.



CONTRATENOR ET BASSVS.

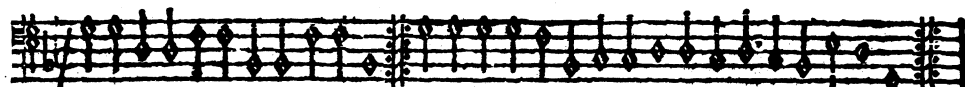
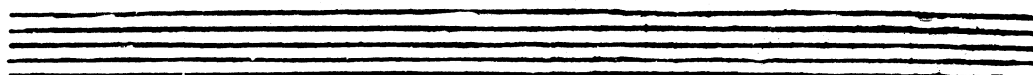
XXV.



bransle IIII.



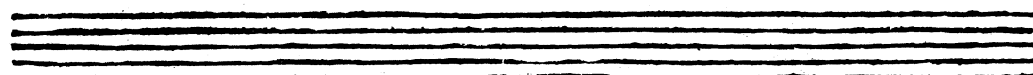
bransle V.



Basses. bransle IIII.



bransle V.



SVPERIVS ET TENOR

Bransle simple V.

Bransle simple VI.

Bransle simple V.

Bransle simple VI.

Bransle simple VI.

Bransle simple VI.

Detailed description: This section contains six staves of musical notation. The first two staves are labeled 'Bransle simple V.' and 'Bransle simple VI.' respectively. The next two staves are also labeled 'Bransle simple V.' and 'Bransle simple VI.'. The final two staves are labeled 'Bransle simple VI.' and 'Bransle simple VI.'. The notation includes various rhythmic values and rests, typical of a dance suite.

CONTRATENOR ET BASSVS.

XIII.

Bransle simple.

bransle simple.

Bassus. bransle simple.

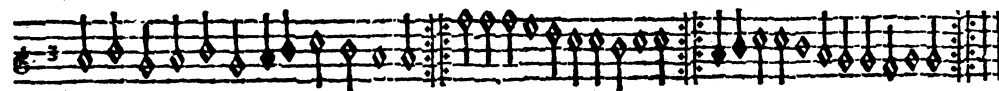
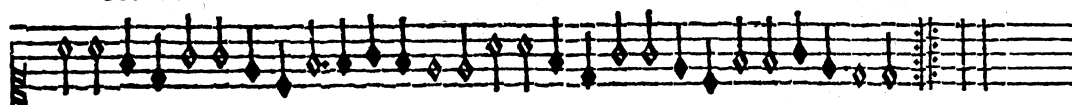
bransle simple.

Detailed description: This section contains seven staves of musical notation. The first two staves are labeled 'Bransle simple.' and 'bransle simple.'. The third staff is labeled 'Bassus. bransle simple.'. The fourth and fifth staves are labeled 'bransle simple.'. The notation includes various rhythmic values and rests, typical of a dance suite.

Premiere fuytte de Branles d'Escoffe. SUPERIVS ET TENOR.



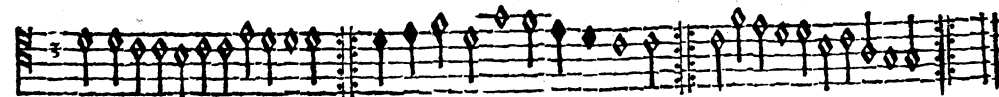
Premier Branfle d'Escoffe.



Branfle 2.



Branfle 1.

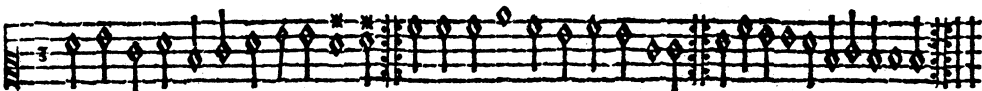
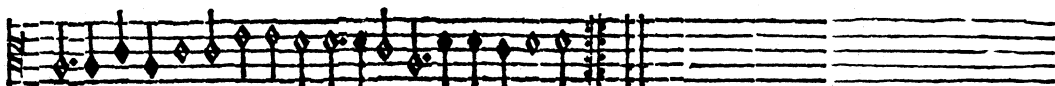


Branfle 2.

CONTRATENOR ET BASSVS.



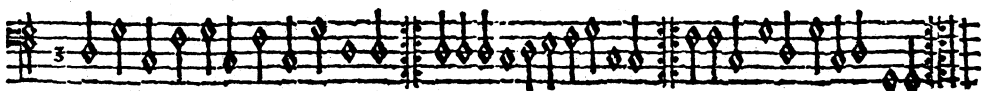
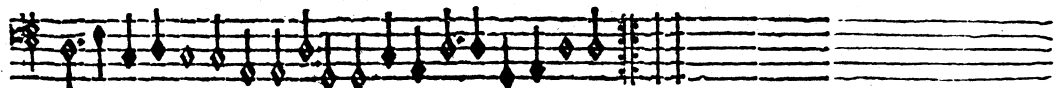
Branfle 1.



Branfle 2.



Branfle 1.



Branfle 2.