

CONTRABASSI

P. HINDEMITH

Лен. Госуд. Филармония
Симфонический оркестр
Б.И.С. 10260

KONZERT

für Horn und Orchester

Moderately fast (♩ = 88-92)

I.

Handwritten musical notation for the first staff, featuring a treble clef, a 4/4 time signature, and a series of notes with accents and slurs. The staff ends with a double bar line and a 6/8 time signature.

Handwritten musical notation for the second staff, featuring a bass clef, a 6/8 time signature, and a series of notes with slurs and a sharp sign. The staff ends with a double bar line and a 4/4 time signature.

(A)

Handwritten musical notation for the third staff, featuring a bass clef, a 4/4 time signature, and a series of notes with slurs and a sharp sign. The staff ends with a double bar line and a 6/8 time signature.

Handwritten musical notation for the fourth staff, featuring a bass clef, a 6/8 time signature, and a series of notes with slurs and a sharp sign. The staff ends with a double bar line and a 5/8 time signature.

Two empty musical staves at the bottom of the page.

5
mf *arco.*

f

V V V

5 3

3 3 5

5 pizz p

arco mf

f

7 6 3

3 7 6 5

5 \textcircled{G} 3

p

cresc. mf

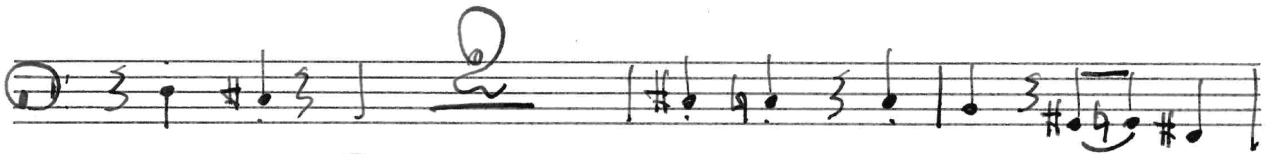
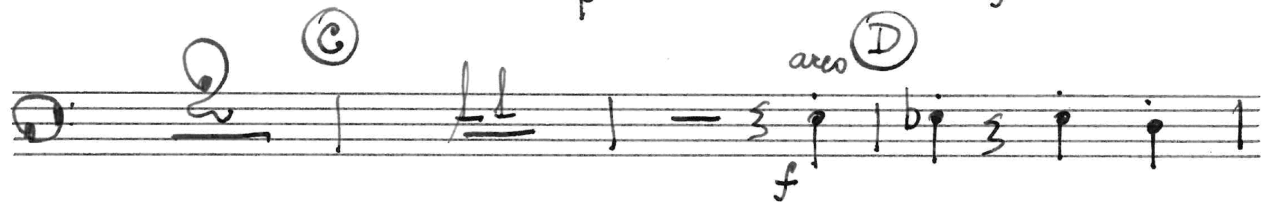
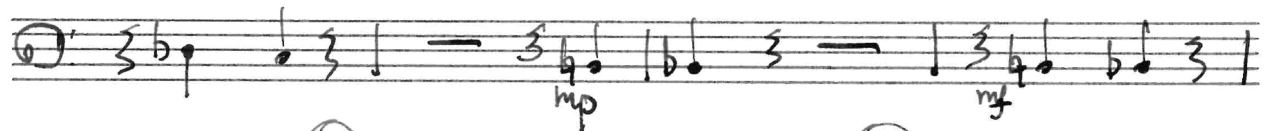
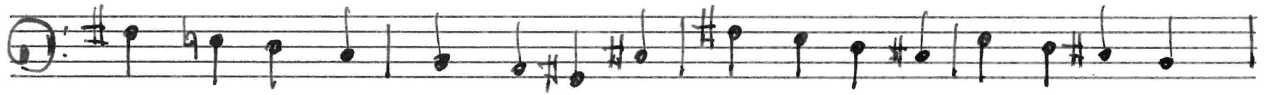
\textcircled{H} p

\textcircled{I}

II.

Very fast ($\text{♩} = 152$)

14 4 (A)



① F G H

A musical staff in 4/4 time. It starts with a whole rest, followed by a half note G, a half note A, and a whole note B. Above the staff are circled letters F, G, and H. There are some handwritten annotations and a double bar line.

① pizz

A musical staff in 4/4 time with a mezzo-piano (mp) dynamic marking. It contains a sequence of eighth and quarter notes, including a triplet of eighth notes.

A musical staff in 4/4 time with a (pizz) dynamic marking. It features a sequence of notes, including a triplet of eighth notes and a sharp sign (#).

(pizz)

A musical staff in 4/4 time with a pianissimo (pp) dynamic marking. It contains a sequence of eighth and quarter notes.

① K pp

A musical staff in 4/4 time with a pianissimo (pp) dynamic marking. It features a sequence of notes, including a triplet of eighth notes, ending with a double bar line.

III

A section separator consisting of three horizontal lines with the Roman numeral III in the center.

Very slow (♩=56)

A musical staff in 4/8 time with a forte (f) dynamic marking. It contains a sequence of notes, including a triplet of eighth notes and a fermata.

VIII

A musical staff in 4/8 time with a forte (f) dynamic marking. It features a sequence of notes, including a circled letter A and the word 'arco'.

A musical staff in 4/8 time with a forte (f) dynamic marking. It contains a sequence of notes, including a triplet of eighth notes.

A musical staff in 4/8 time with a forte (f) dynamic marking. It features a sequence of notes, including a circled letter B and a triplet of eighth notes.

Handwritten musical notation on a single staff, featuring a sequence of eighth and sixteenth notes with various accidentals and dynamics like 'mf'.

Handwritten musical notation on a single staff, including a double bar line and a repeat sign, with dynamics 'p' and 'pp'.

Moderately fast (♩. = 72)

Handwritten musical notation on a single staff showing chord diagrams for C, D, and E major chords.

Handwritten musical notation on a single staff showing chord diagrams for F major and G major chords.

Handwritten musical notation on a single staff with 'pizz' marking and various chord diagrams.

Handwritten musical notation on a single staff with 'pizz', 'p', and 'scherzando' markings, and chord diagrams.

Handwritten musical notation on a single staff with 'p' marking and various chord diagrams.

Handwritten musical notation on a single staff with 'pp' marking and various chord diagrams.

Handwritten musical notation on a single staff with various chord diagrams.

Handwritten musical notation on a single staff with 'p' and 'pp' markings and various chord diagrams.

Fast (♩ = 132)

Handwritten musical score for a piece titled "Fast (♩ = 132)". The score consists of ten staves of music. The first staff begins with a treble clef, a 2/2 time signature, and a forte (f) dynamic. The music features a variety of rhythmic patterns, including eighth and sixteenth notes, and rests. The second staff includes a fermata over a note and a 3/2 time signature change. The third staff has a circled "II" above a note and a 2/2 time signature. The fourth staff shows a 3/2 time signature and a "mf" dynamic marking. The fifth staff starts with a bass clef and a 2/2 time signature, followed by a 3/2 time signature change. The sixth staff has a 3/2 time signature and a forte (f) dynamic. The seventh staff includes a circled "I" above a note and a 3/2 time signature. The eighth staff features a 3/2 time signature and a forte (f) dynamic. The ninth staff continues with a 3/2 time signature and a forte (f) dynamic. The tenth staff ends with a fermata. At the bottom of the page, there are two empty staves with the initials "V.S." written on the right side.

6

8

(K) ritard.

a tempo (♩ = 132)

rit.

(L) a tempo

rit.

a tempo

(M) un poco lento (♩ = 76)

(N) piu lento

||

rit.

Lively (♩ = 126)

①

con Sord.

②

pizz.

③

④

(pizz)

⑤

V.S.

9 / 10 *arco*

pp ✓

Ⓧ

mf *p*

pp

Ⓧ

riten. *Very slow* ($\delta = 56$)

VIII

Ⓧ

mp *mf* *p* *pp*