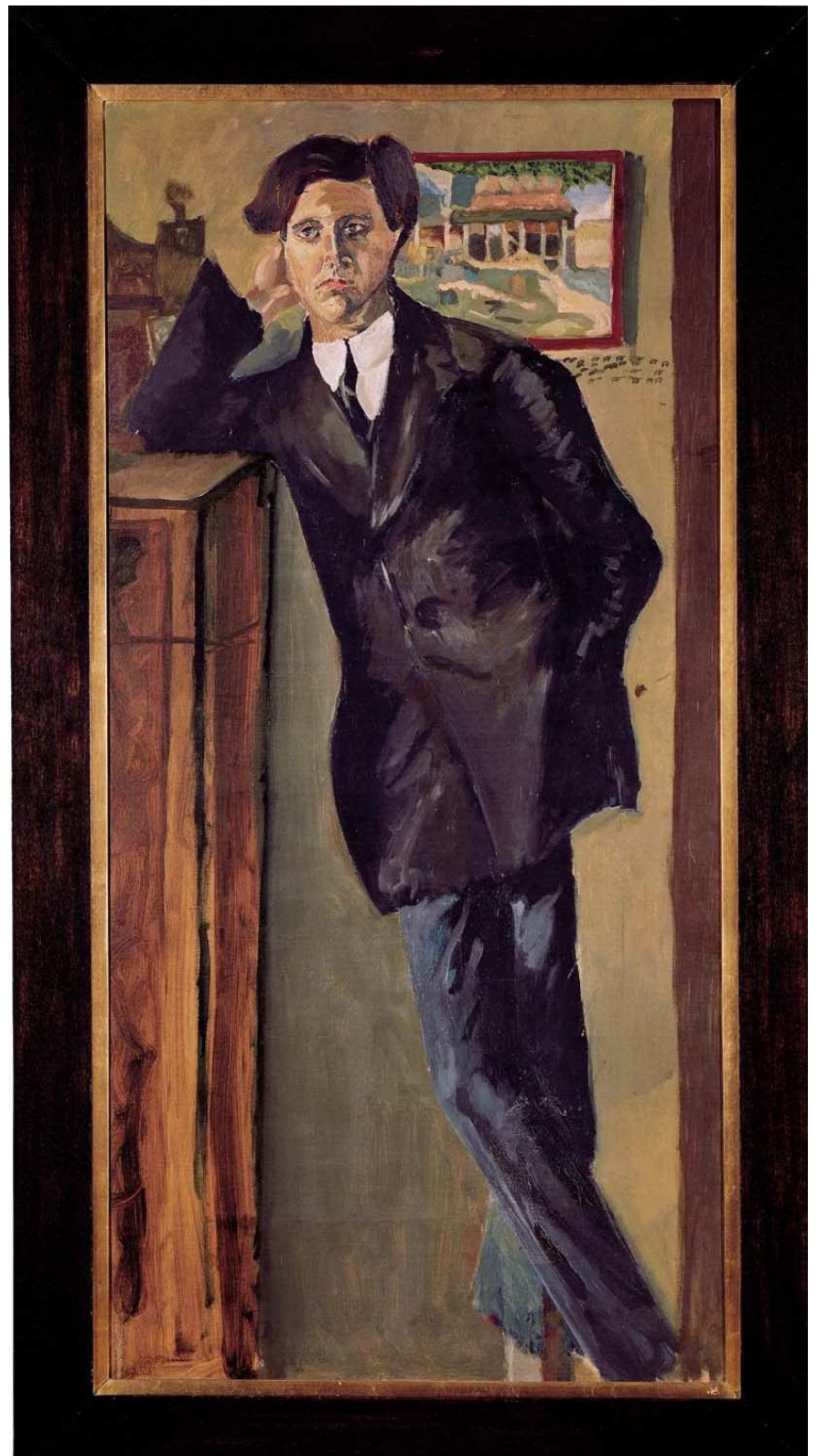


3. Horn (F)



Alban Berg

Sieben Frühe Lieder

auf Texten von Hauptmann, Lenau, Storm, Rilke,
Schlaf, Hartleben und Hohenberg

I. Nacht (Carl Hauptmann)*Sehr langsam* (♩ = ca. 48)

gestopft +
 +
 offen
pp *pp* *pp* *poco cresc.*

rit. - - *a tempo*

7
poco f > *pp* >

rit. (molto) a tempo poco rit. a tempo rall. a tempo rit. Etwas langsamer

12
 2 3 2 1.Horn

Ganz breit quasi Wie zu Anfang Etwas zunehmend.

23
 gestopft + +
p *pp* *fp* *pp* *p* *poco cresc.*

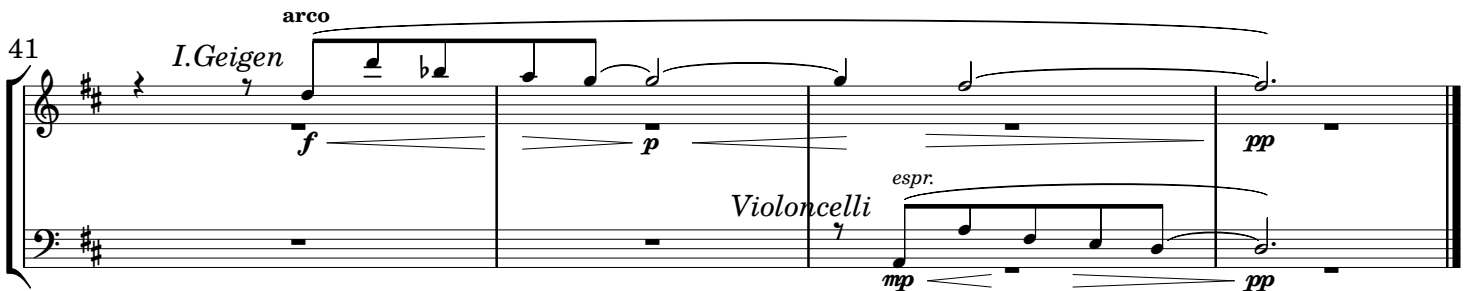
nimmt Dpf.

Zeit lassen Wieder abnehmend quasi Tempo I.

32
 3
(mp) *(mf)*

II. Schilflied (Nikolaus Lenau) — TACET

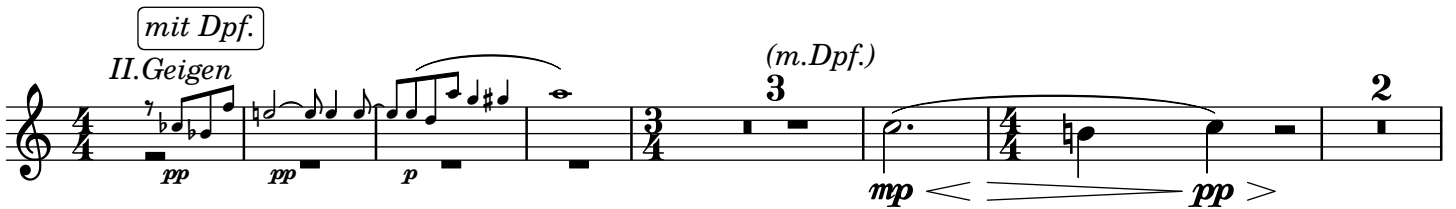
III. Die Nachtigall (Theodor Sturm) — TACET



IV. Traumgekrönt (Rainer Maria Rilke)

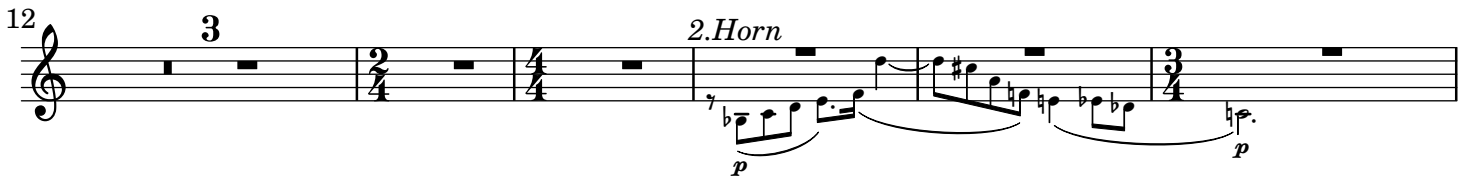
Langsam (♩ = ca. 46)

poco accel. rit. (molto) a tempo



poco accel. poco rit. a tempo

poco accel.



rit. (molto) a tempo

poco accel. rit. (molto) a tempo



V. Im Zimmer (Johannes Schlaf) — TACET

Musical score for 'Im Zimmer' (Johannes Schlaf) — TACET. The score is in G major and 3/4 time. It features a series of rests for the first 16 measures, with dynamic markings *pp* and *p*. The Oboe part begins in measure 17 with a melodic line starting on G4. The Horn part (1. Horn) enters in measure 17 with a melodic line starting on G4. The score includes dynamic markings *pp*, *p*, and *pp*, and a *rit.* marking.

VI. Liebesode (Otto Erich Hartleben)

Sehr langsam (♩ = ca. 46)

mit Dpf.

rit.

a tempo

Musical score for 'Liebesode' (Otto Erich Hartleben). The score is in G major and 3/4 time. It features a series of rests for the first 6 measures, with dynamic markings *pp* and *pp*. The 1. Klarinette part begins in measure 7 with a melodic line starting on G4. The score includes dynamic markings *pp*, *pp*, and *pp* < (*p*) >, and a *rit.* marking.

poco rit.

Musical score for 'Liebesode' (Otto Erich Hartleben). The score is in G major and 3/4 time. It features a series of rests for the first 6 measures, with dynamic markings *pp* and *pp*. The 1. Klarinette part begins in measure 7 with a melodic line starting on G4. The score includes dynamic markings *pp*, *poco cresc.*, and *molto dim.*

a tempo

poco a poco cresc.

Musical score for 'Liebesode' (Otto Erich Hartleben). The score is in G major and 3/4 time. It features a series of rests for the first 6 measures, with dynamic markings *pp* and *pp*. The 1. Klarinette part begins in measure 7 with a melodic line starting on G4. The score includes dynamic markings *pp* and *pp*.

poco rit.

(kurz)

quasi a tempo

Musical score for 'Liebesode' (Otto Erich Hartleben). The score is in G major and 3/4 time. It features a series of rests for the first 6 measures, with dynamic markings *pp* and *pp*. The 1. Klarinette part begins in measure 7 with a melodic line starting on G4. The score includes dynamic markings *pp*, *(f)*, *mf*, and *p*.

VII. Sommertage (Paul Hohenberg)

Schwungvoll (♩ = ca. 60) *rit. a tempo poco a poco accel.*

ohne Dpf.

arco *mp*

p *6* *4* 1.Horn *p*

Violoncelli (get.) 8

allargando *poco pesante* *a tempo*

17 *mf* *fp* *pp* *poco* *p dim.*

rit. a tempo, ma molto rubato *Tempo I* *poco accel.*

(rit. accel. rit. accel. rit.)

25 *pp* *p marc.*

allargando *a tempo*

32 *mp* *mf* *f* *p*