

# SINFONIETTA

for Concert Band

Ingolf Dahl  
(1961)

1st F Horn

## 1. Introduction and Rondo

Moderato e dolce ( $\text{♩} = 76$ )

6 1 [A] 18 optional cut 11 4

*poco rit.* *a temp*

[B] Allegro con brio ( $\text{♩} = 120$ )

Hn. 3 *mf*

Hn. 4 *mf*

[C] 1 4

[D] 2

*p*

[E] 11 [F] 4

*p*

9 [G] 3 1 10 [H] 5

2 Cors. soli

bring out

Tbn

*mf espr.*

*staccatissimo*

I

2

muted

J

*p*

*f*

2

open

*mf*

*f*

*mf*

4

K

*f*

*mf*

con sord.

2

3

L

*mf*

Cors.

+ Cls.

5

3

2

muted

*mf espr.*

M

1

1

(muted)

*mf*

N

3

2

2

4

(muted)

1

open ten.

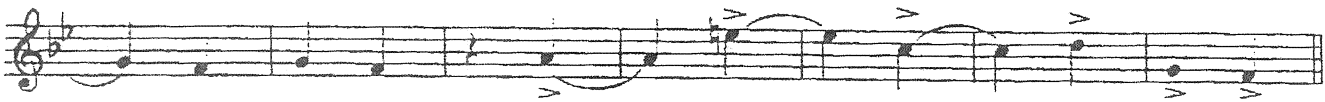
*ff*

3

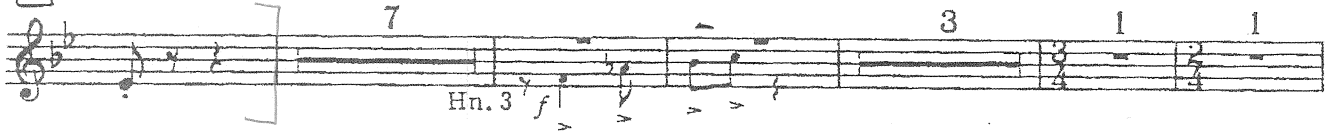
3

3

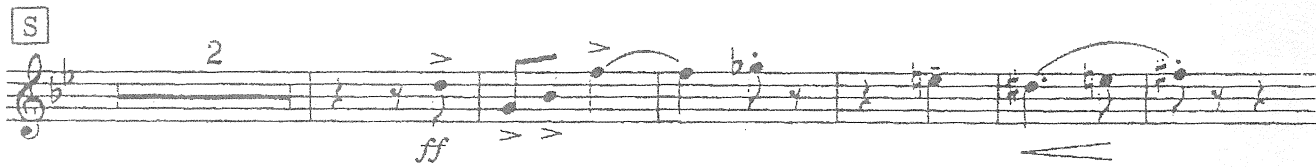
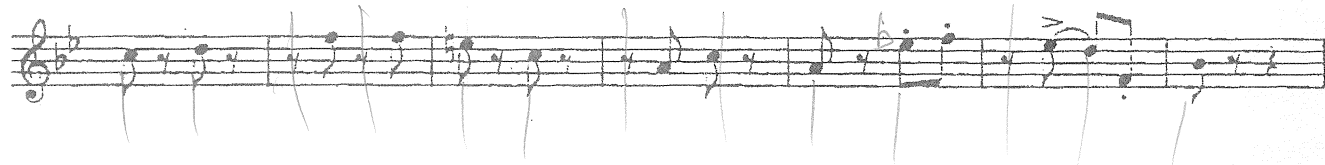
sempre l'istesso tempo



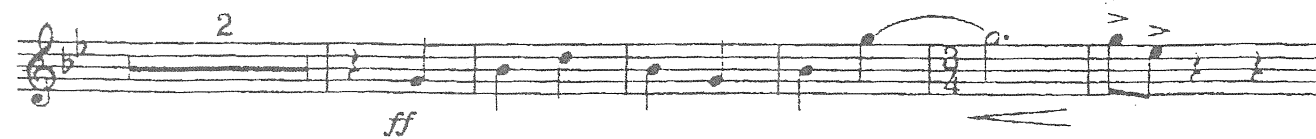
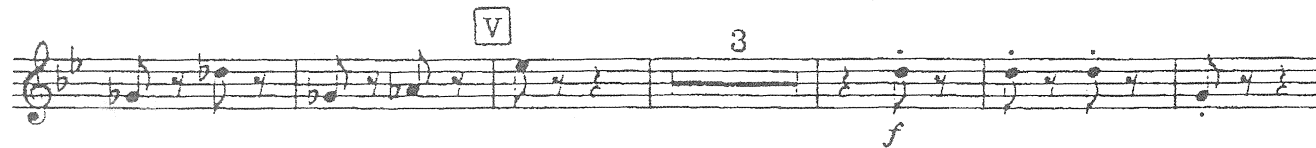
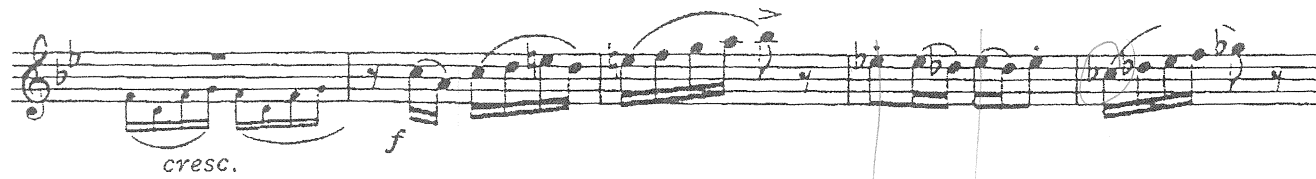
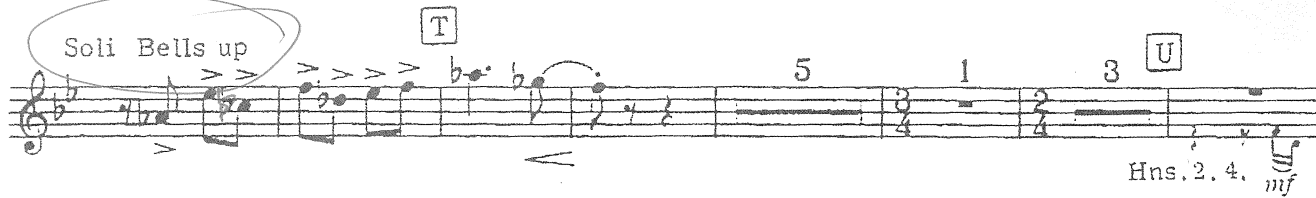
**P** Allegro con brio, come prima (♩ = 120)



**Q** 12 **R** Con spirito, ma leggero



Soli Bells up



# 1st Horn in F 2. Pastoral Nocturne

Andantino con moto (♩. = 63-60)

4 1 **A** 3

*pp* *p*  $\rightarrow$  *pp*

2 **B** 1 con sord. *pp*

1 (con sord.) *pp staccatissimo*

*sempre con moto* **C** 5

open 1 **D** *P grazioso* *mf dolce, espr.*

$\rightarrow$  *pp* *p*

**E** 3 *pp*

con sord. *p*

1 open **F** *mf espr.*

*pp*  $\leftarrow$  *mf*  $\text{♩} = \text{♩}$

Allegretto molto grazioso (quasi Gavotte) (♩ = 90-86)

G con sord.

H

open

I

Andantino come prima (♩ = 63-60)

Un poco più moderato

J

Andantino come prima

K

open Solo

Bring out

f molto espr.

# 3. Dance Variations

Vivacissimo (♩ = 152)

Musical staff with notes and dynamics. Dynamics include *ff* and *sf*. A measure number '5' is at the end.

**A**

Musical staff A with notes and dynamics. Dynamics include *ff* and *sf*. A triplet '3' is marked.

**B**

Musical staff B with notes and dynamics. Dynamics include *f* and *ff*. A triplet '3' is marked.

Musical staff with notes and dynamics. Dynamics include *ff*.

**C** Con tutta forza

Musical staff C with notes and dynamics. Dynamics include *sf*. A triplet '3' is marked.

Musical staff with notes and dynamics. Dynamics include *sf*.

**D**

Musical staff D with notes and dynamics. Dynamics include *p* and *pp*. A measure number '9' is at the end.

**E** 1 **F** 8 **G** 7 **H** 1

Musical staff with notes and dynamics. Dynamics include *fff*. A measure number '9' is at the end.

Cors. Soli

Reeds

**H** 9

Musical staff H with notes and dynamics. Dynamics include *pp*. A measure number '9' is at the end.

+ Bar., Tuba soli

**I** 2

Musical staff I with notes and dynamics. Dynamics include *pp* and *sfp*. A measure number '2' is at the end.

con sord.

**J**  
*pp* (no accent) *p*

**K** 2 2 (stopped)  
*mf sf sf sf* Bsn. solo *p*

**L** 7 2  
*poco stentando*

**M** Un poco meno mosso  
 Cors. + Tbn. 1. Cl. Solo *mf* *Sra - - -* Solo *f cantabile*

**N**

*poco rit.*  
*p espr.*

**O** 3 2 1 G. P.  
*pp a tempo mp*

Tempo I, Vivacissimo (♩ = 152)

**P**  
*ff f*

3

2 **Q** 1 3  
*ff mf*

2

*mf grazioso*

*p*

8

*pp*

1

*f cresc.* *sf*

Con tutta forza

1

*sf* *sf* *sf*

Bells up

*sf*

4

*pp*

Bells down

4

8

1

4

*ril. poco a poco*

Hns. 3. 4. *mf* *pp*

12

*pp*

3

Hns. 3. 4.

*ppp*

con sord.

*ppp*

optional alternate ending

*ppp*

con sord.

*ppp molto accel. (non cresc.)*

Allegro molto ( $\text{♩} = 132-144$ )

senza sord. *ff*

Hns. 3. 4.

1