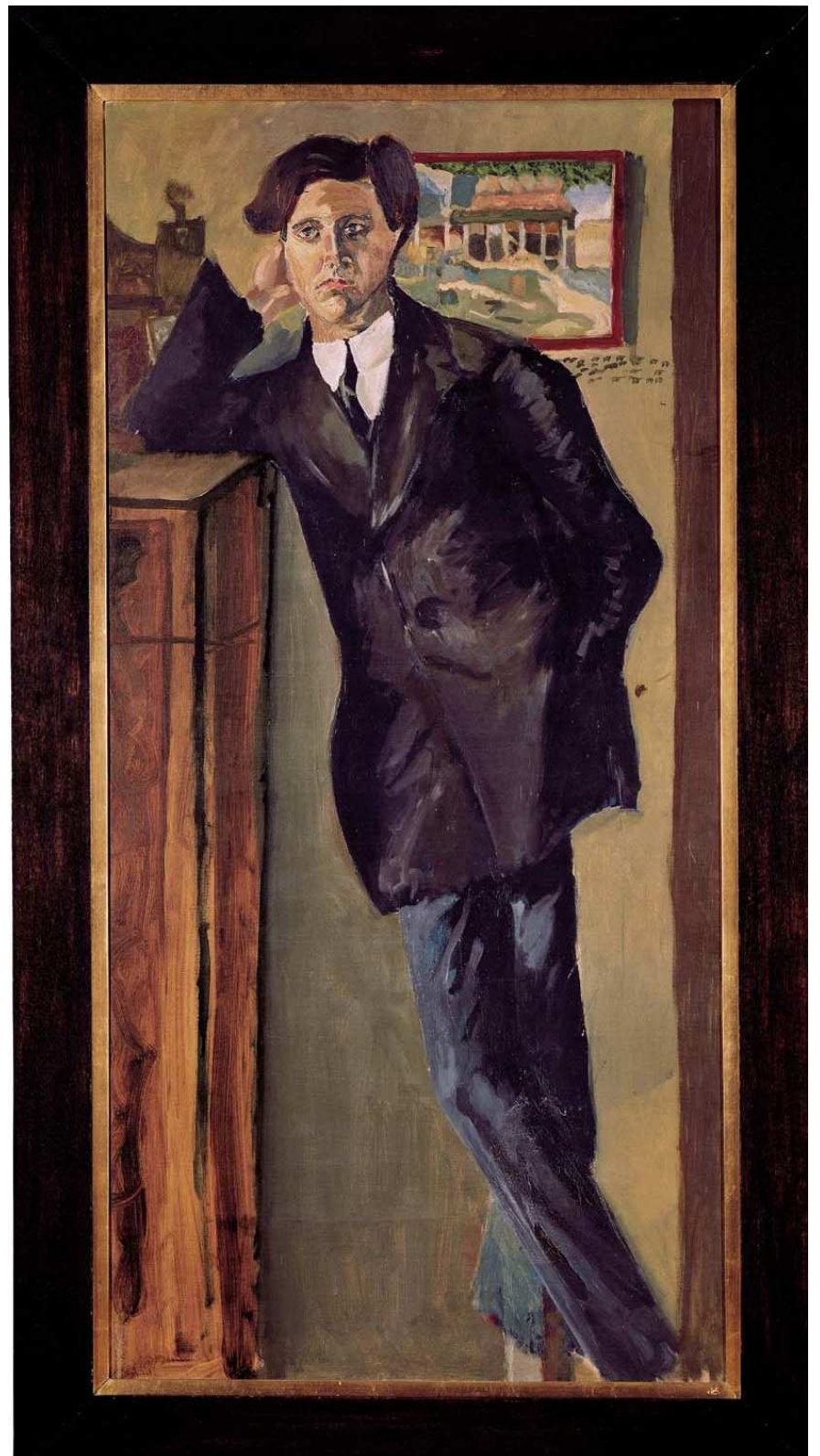


4. Horn (F)



Alban Berg

Sieben Frühe Lieder

auf Texten von Hauptmann, Lenau, Storm, Rilke,
Schlaf, Hartleben und Hohenberg

IV. Traumgekrönt (Rainer Maria Rilke) — TACET

V. Im Zimmer (Johannes Schlaf) — TACET

Musical score for 'Im Zimmer' (Johannes Schlaf). The score is in G major and 3/4 time. It begins with a 4-measure rest, followed by a 5-measure rest, and then a 4-measure rest. The first staff is for Oboe, starting with a *p* dynamic. The second staff starts at measure 17 and includes dynamics *pp*, *p*, *p*, and *pp*. It also features markings for '(m. Dpf.)' and '1. Hrn.'.

VI. Liebesode (Otto Erich Hartleben)

Sehr langsam (♩ = ca. 46) *rit.* , *a tempo*
 mit Dpf.

Musical score for 'Liebesode' (Otto Erich Hartleben). The score is in G major and 3/4 time. It begins with a 7-measure rest, followed by an 8-measure rest. The first staff is for 1. Klarinette, starting with a *pp* dynamic. The score includes various dynamics such as *pp*, *poco cresc.*, *dim.*, *a tempo*, *poco a poco cresc.*, *poco rit.*, and *quasi a tempo*. It also features markings for '(kurz)' and *f*.

VII. Sommertage (Paul Hohenberg)

Schwungvoll ($\text{♩} = \text{ca. } 60$) *rit. a tempo poco a poco accel.*

ohne Dpf.

arco *mp* 6 4 1.Horn

Violoncelli (get.) 8

allargando poco pesante a tempo rit.

17 *mf* *fp* *pp* *p*

a tempo, ma molto rubato (rit. accel. rit. accel. rit.) Tempo I poco accel.

Oboe 8

26 *p* *mp* *mf* *p marc.*

allargando a tempo

32 *mp* *f* *p*